

Gerfix Spray Adhesive Datasheet



Recycle:

Bleed off excess pressure. Recycle aluminum can according to state and local requirements.

C.A.R.B. VOC Category: Spray adhesive, C.A.R.B. limit 55% VOC. This product contains 0.020 g/ml VOC content.

WARNING: CONTENTS UNDER PRESSURE. Do not puncture or incinerate container. Do not expose to heat or store at temperatures above 120°F (48°C). **AVOID FREEZING TEMPERATURES.** Use only with proper ventilation. Avoid contact with skin, face and eyes. Do not ingest. **FIRST AID:** For skin contact remove adhesive from skin with soap and warm water. For eye contact, flush eye with large quantities of water for 15 minutes and seek medical attention. If ingested, do not induce vomiting, give water to dilute, and seek medical attention immediately. **DO NOT** concentrate vapors and inhale fumes. **KEEP OUT OF REACH OF CHILDREN.**

See website for complete detailed warranty.

1. Substrate Prep:

- Substrate must be prepared in accordance with ASTM F710-11.
- Approved substrate must be clean, dry, smooth and dust free.
- HVAC must be continuously operated for a minimum of 72 hours at a temperature no less than 68°F (20°C) prior to installation.
- Sweep and damp mop / use shop vac to remove dust.
- Do not use oil-based sweeping compounds.

2. Spray Adhesive:

- Shake can well.
- Spray from a standing position. Hold can 20-30 inches (50-75 cm) from floor.
- Match spray pattern to diagram on left.
- Protect walls from overspray with a spray shield or piece of cardboard.

3. Adhesive Dry Time:

- Allow adhesive to dry to the touch.
- Test: lightly touch adhesive – there should be no adhesive transfer to your fingers.
- Too much adhesive or high humidity will increase dry time.

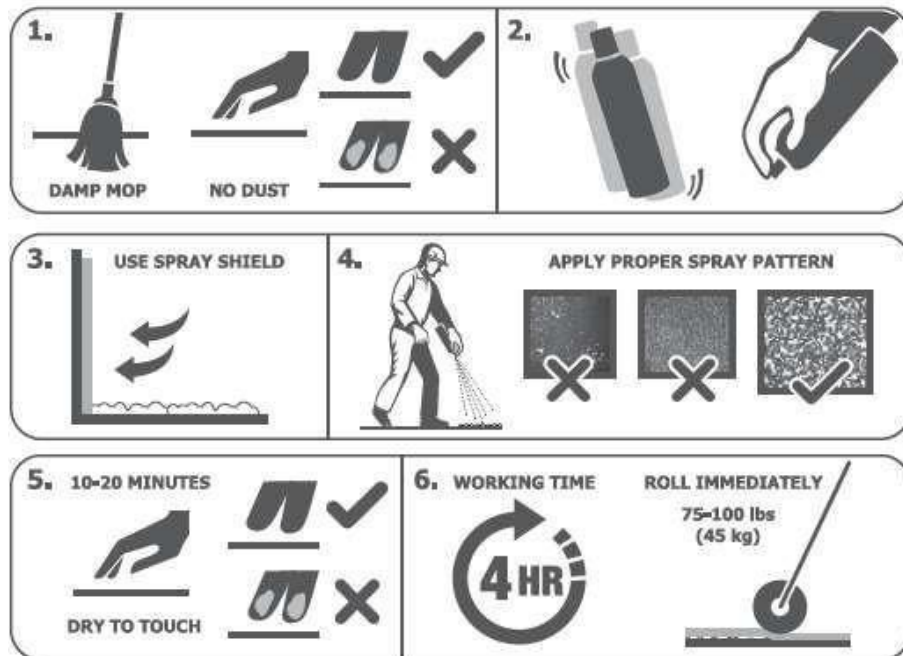
4. Install:

- Open working time after tack is 4 hours.
- Install flooring per manufacturer's instructions.
- Roll floor immediately with a 100 lb. roller.
- Floor is open to all traffic immediately after installation.

5. Clean Up:

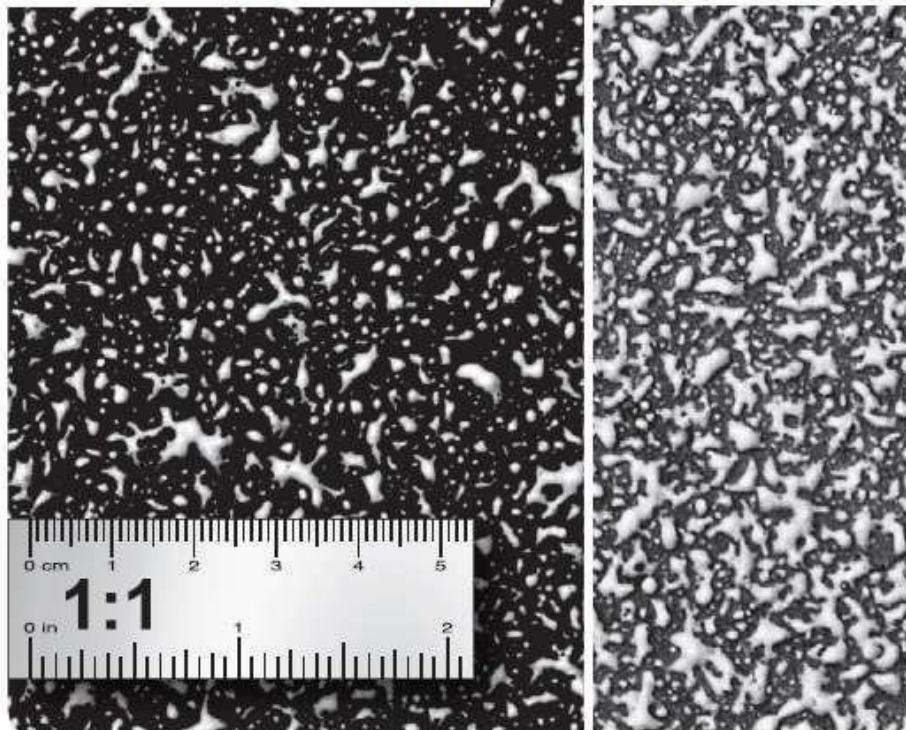
- Use a damp cloth for wet overspray.
- Use mineral spirits for dry overspray.

Gerflor® Gerfix Resilient Sheet Spray Adhesive is warranted to withstand concrete moisture emissions up to 8lbs/24 hrs/1000 ft² or 95 % RH and pH must be no more than 11.



Coverage: 150-185 ft² (14-17.2 m²)

For sheet vinyl applications only, seams & perimeter double coverage.



TECHNICAL DATA

CHEMICAL TYPE	Water-based Acrylic Blend
APPEARANCE	Milky white frost bubbles
ODOR	Sweet mild odor
FLASH POINT	Will not burn
NFPA 704 FLAMMABILITY RATING	0 (Non-Flammable)
SHELF LIFE	3 years, if unopened
OPEN TIME	4 hours
DRY TIME	Once adhesive is dry to touch (10-20 minutes)
VOC CONTENT	0.020 g/ml calculated per EPA Test Method 8260B
FOOT TRAFFIC ALLOWANCE	Immediately
HEAVY MACHINERY ALLOWANCE	Immediately
RESISTANCE TO MOISTURE	Excellent: 8 lbs/1,000 sq. ft. or 95% RH – 11 pH
UNDERFLOOR HEATING SYSTEMS	Yes
STORAGE	Do not subject to freezing temperatures

COVERAGE GUIDE

For all sheetgoods and sports flooring
from 150 to 167 sq ft per can

For any information, please refer to Gerflor Technical Services.

Gerflor USA
750 Veteran Parkway
Bolingbrook, IL 60440
Tel: 877-Gerflor
Tel: 877-437-3567
gerflorusa.com